

DUAL TINY RETREAT



4617 KETCH ROAD





4617 KETCH ROAD

1 BED ~ 1 BATH ~ 375 SQFT

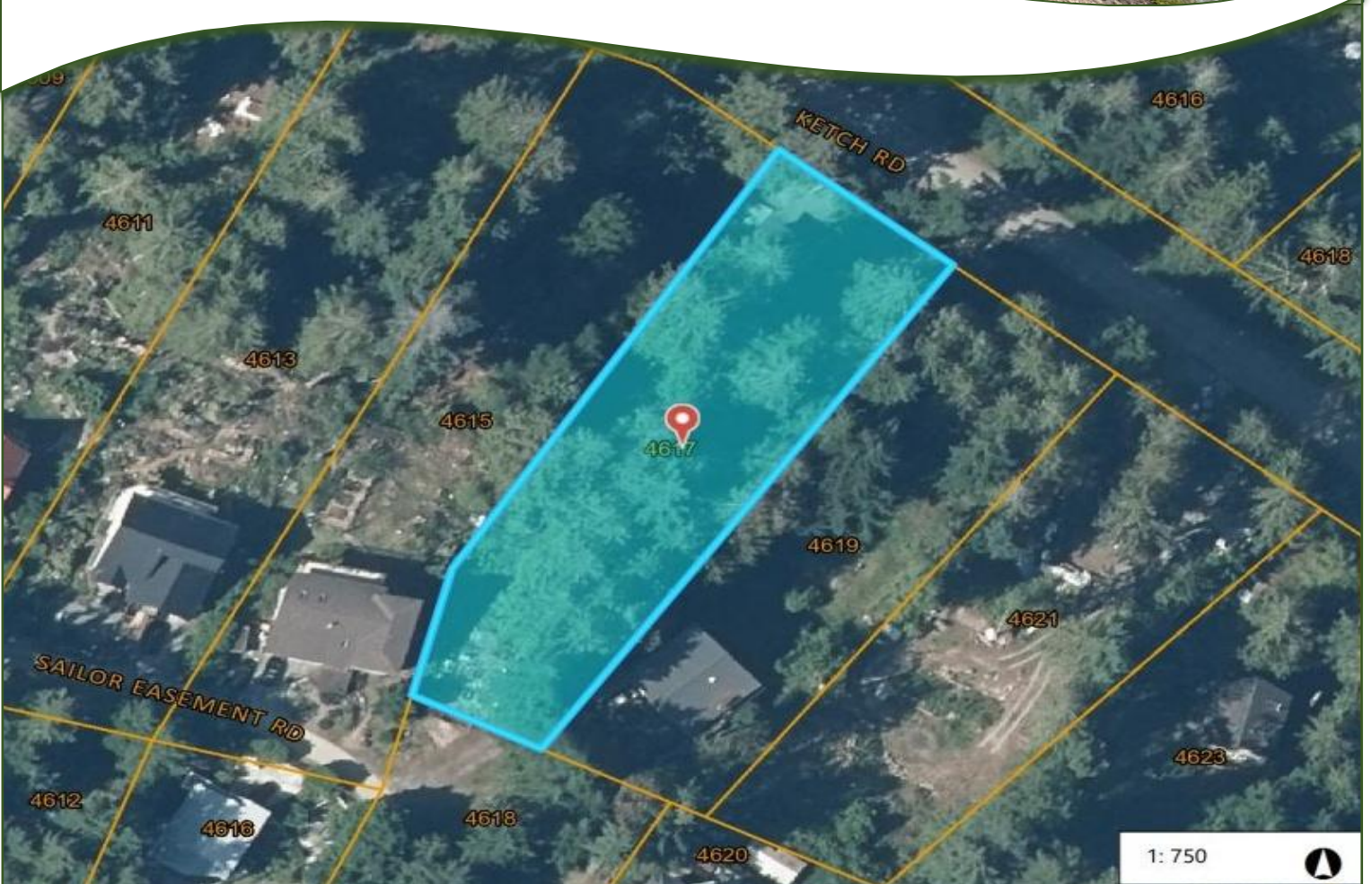
Tiny home living at its finest, times two. This one-of-a-kind property features a custom craftsman main cabin plus a permitted, engineered treehouse, both designed with creativity, comfort, and smart storage in mind. The main cabin offers a flexible layout with an elevator bed that tucks away by day, a cozy loft option, and a spacious bathroom with laundry. The treehouse delivers a magical, elevated retreat in the trees. With two access points, you can park above or below the property. Enjoy a hot tub under the stars in your private oasis with a propane fire pit, and a sunny garden area. Updates include interior paint, tree work, a privacy fence, fresh gravel, EV charging and a secondary roughed-in driveway for RV or boat parking. In Magic Lake Estates with marina access, tennis courts, parks, and trails nearby. Sold furnished with brand new pieces, making it completely turn-key. Has previously operated as a successful Airbnb for 2 years, offering both lifestyle and income potential.



PLOT PLAN & AERIAL VIEW

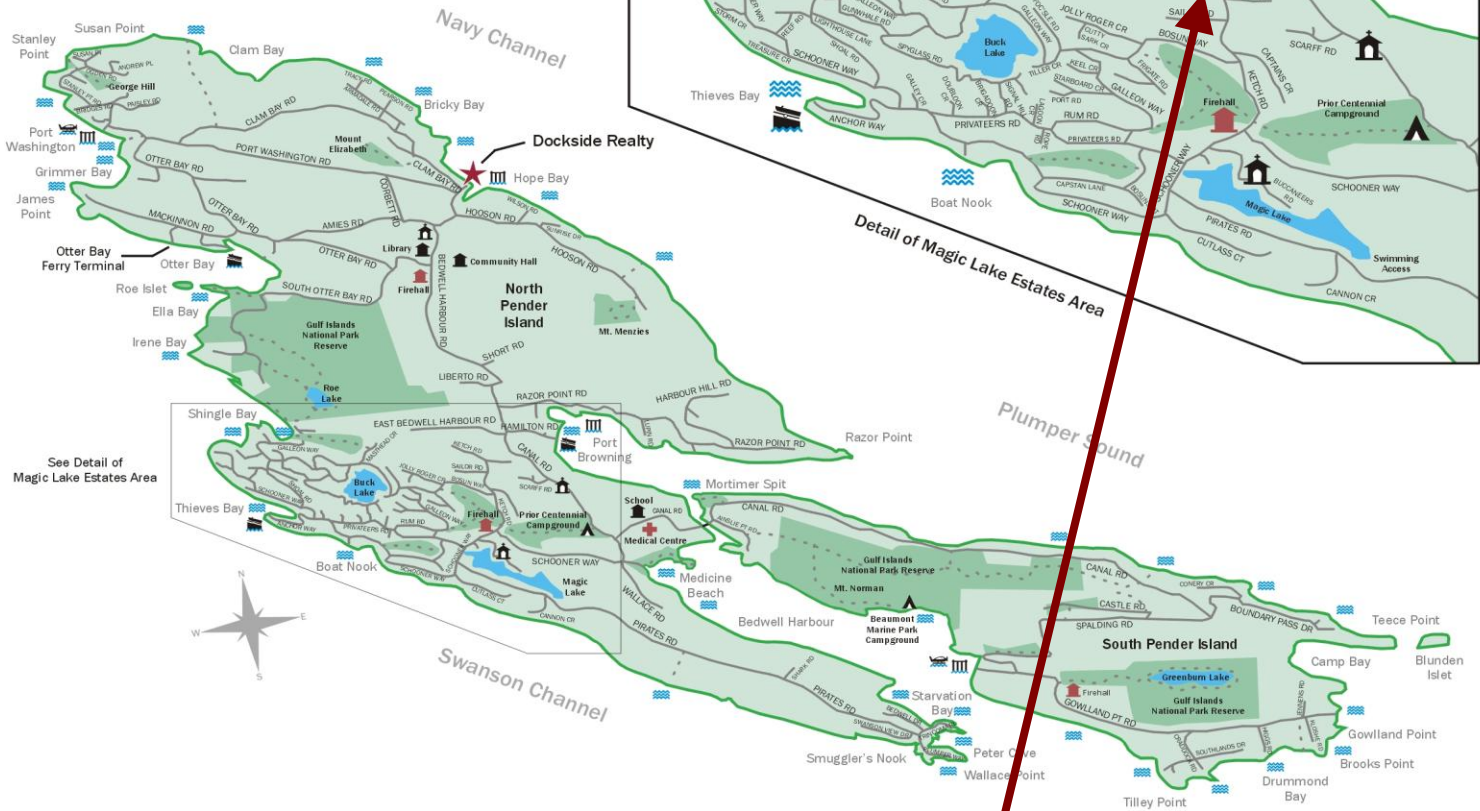
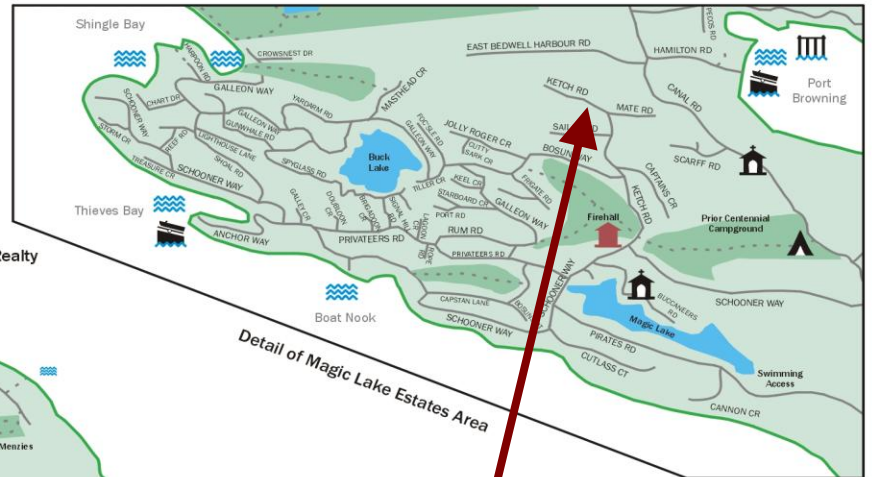


4617 KETCH ROAD



PENDER ISLAND MAP

Pender Islands British Columbia, Canada

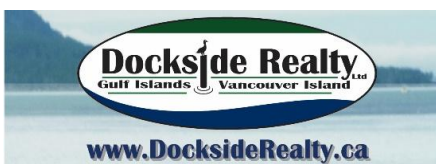


- Dockside Realty
- Public Wharf
- Boat Launch
- Float Plane
- Firehall
- Medical Centre
- Municipal
- Place of Worship
- Campground
- Walking Trail
- Ocean Access/View

Subject Property
4617 KETCH ROAD

Map courtesy of Dockside Realty. Design Copyright © 2012 Minsky Designs www.minskydesigns.com. All rights reserved.

DISCLAIMER: While every effort is made to provide reliable information, Dockside Realty Ltd. makes no representations or warranties as to the accuracy of this brochure. All measurements are approximate; the buyer is responsible for verifying all data provided.



Pender Island • Saturna Island • Vancouver Island
info@DocksideRealty.ca • 250-629-3166